

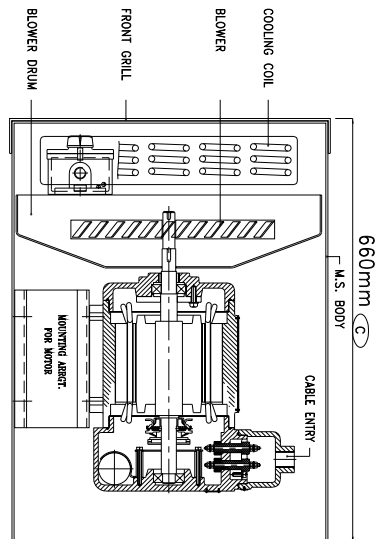
600mm (fabricated case)
(variable length)

440mm (B) (fabricated case)

CMFR TESTED FLP-WP ENCLOSURE FOR THERMOSTAT (Ex-d)
SUITABLE FOR USE IN ZONE-1, GAS GROUPS - IIA & IIB

CAT. No. : JB/2C/2017
CMFR CERT. No. : IN/CMFR/TR22/R/H136 Dt. 08/07/2022
PESO No. : .
BIS LICENCE No. : CM/L-0003931365

FRONT VIEW OF COOLING UNIT

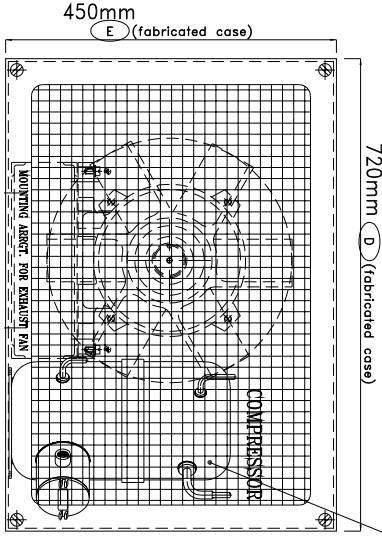


SIDE VIEW

600mm (C) (fabricated case)

CMFR TESTED FLP-WP TERMINAL/COMPRESSOR UNIT ENCLOSURE
(Ex-d) SUITABLE FOR USE IN GAS GROUPS-I, IIA & IIB

CAT. No. : SAC/211
CMFR CERT. No. : IN/CMFR/TR22/R/H15
Dt. : 07/04/2022
PESO CERT. No. : .
BIS LICENCE No. : CM/L-0003931365



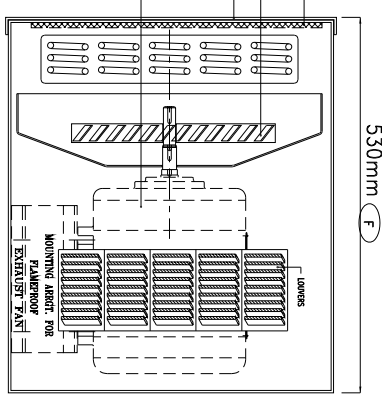
FRONT VIEW OF CONDENSING UNIT

720mm (D) (fabricated case)

450mm (E) (fabricated case)

CMFR TESTED FLP-WP MOTOR ENCLOSURE
(Ex-d) SUITABLE FOR USE IN GAS GROUPS-I, IIA & IIB

CAT. No. : FAN/140
CMFR CERT. No. : IN/CMFR/TR22/R/H561
Dt. : 31/03/2022
PESO CERT. No. : P340766/1
Dt. : 18/07/2022
BIS LICENCE No. : CM/L-0003931365



SIDE VIEW

AIR CONDITIONING UNIT SUITABLE FOR :

- 1 - FLAMEPROOF - ZONE-1 & 2, GAS GROUPS - IIA & IIB
- 2 - MATERIAL OF CONSTRUCTION - M.S. FABRICATED CASE
- 3 - FINISH - INSIDE & OUTSIDE LIGHT GREY EPOXY SPRAY PAINT SHADE No. 631
- 4 - EARTHING - 2 Nos. OUTSIDE SCREW WITH PLAIN WASHER
- 5 - HARDWARE - STAINLESS STEEL

Fp-Wp Enclosure for Motor : (CAT. No. : FAN/140)

- 1 - FLAMEPROOF (Ex d) PROTECTION - IIA/IIB & IIC, IS/IEC 60079-1 (2014)
- 2 - INGRESS (IP) PROTECTION - IP-66, IS/IEC 60529 (2001). (Reaffirmed 2014)
- 3 - MATERIAL - CAST IRON (C.I.) / M.S.
- 4 - FINISH - INSIDE & OUTSIDE LIGHT GREY EPOXY SPRAY PAINTING SHADE No. 631 AS PER IS:5
- 5 - EARTHING - 1 No. INTERNAL & 2 Nos. EXTERNAL SCREW OF M6 SIZE WITH 2 Nos. PLAIN WASHERS
- 6 - HARDWARE - STAINLESS STEEL
- 7 - CABLE ENTRY - 1 No. M20 SIZE ENTRY WITH 1 No. M20 SIZE (FLP-WP) BRASS NICKEL PLATED DOUBLE COMPRESSION TYPE CABLE GLAND OF 'SUDHIR' MAKE
- 8 - TERMINALS - 2 Nos. 3/16" STUD TYPE TERMINALS OF 'SUDHIR' MAKE
- 9 - MOTOR RATING - 920 RPM, SINGLE PHASE, 0.25 HP

Fp-Wp Enclosure for Thermostat : (CAT. No. : JB/2C/2017)

- 1 - FLAMEPROOF (Ex d) PROTECTION - IIA/IIB & IIC, IS/IEC 60079-1 (2014)
- 2 - INGRESS (IP) PROTECTION - IP-66, IS/IEC 60529 (2001). (Reaffirmed 2014)
- 3 - MATERIAL - CAST ALUMINIUM ALLOY LM6
- 4 - FINISH - INSIDE & OUTSIDE LIGHT GREY EPOXY POWDER COATING SHADE No. 631 AS PER IS:5
- 5 - EARTHING - 1 No. INTERNAL & 2 Nos. EXTERNAL SCREW OF M4/M6 SIZE WITH 2 Nos. PLAIN WASHERS
- 6 - HARDWARE - STAINLESS STEEL
- 7 - CABLE ENTRY - 2 Nos. M20 SIZE ENTRIES WITH 1 No. M20 SIZE (FLP-WP) BRASS NICKEL PLATED DOUBLE COMPRESSION TYPE CABLE GLAND & 1 No. M20 SIZE M.S. (FLP) STOPPING PLUG OF 'SUDHIR' MAKE

Fp-Wp Compressor & Terminal Unit : (Cat. No. : SAC/211)

- 1 - FLAMEPROOF (Ex d) PROTECTION - IIA/IIB & IIC, IS/IEC 60079-1 (2014)
- 2 - INGRESS (IP) PROTECTION - IP-66, IS/IEC 60529 (2001). (Reaffirmed 2014)
- 3 - MATERIAL - CAST IRON (C.I.) / M.S.
- 4 - FINISH - OUTSIDE BLACK EPOXY SPRAY PAINTING SHADE No. AS PER IS:5
- 5 - EARTHING - BRASS/S.S. SCREW OF M4/M6 SIZE WITH PLAIN WASHERS
- 6 - CABLE ENTRY - 2 Nos. M20 SIZE WITH 1 No. M20 SIZE (FLP-WP) BRASS NICKEL PLATED DOUBLE COMPRESSION TYPE CABLE GLAND OF 'SUDHIR' MAKE
- 7 - COMPRESSOR - 220-240V AC, 50 Hz., SINGLE PHASE SUPPLY, SUITABLE FOR 2 TONNE CAPACITY FOR SPLIT TYPE AIR CONDITIONING UNIT
- 8 - GAS USE IN COMPRESSOR FOR REFRIGERANT IS '407' TYPE GAS

NOTE :

COMPONENT LAYOUT IS TENTATIVE RELOCATION OF PARTS & COMPONENTS IS POSSIBLE AT THE TIME OF ACTUAL MANUFACTURING.

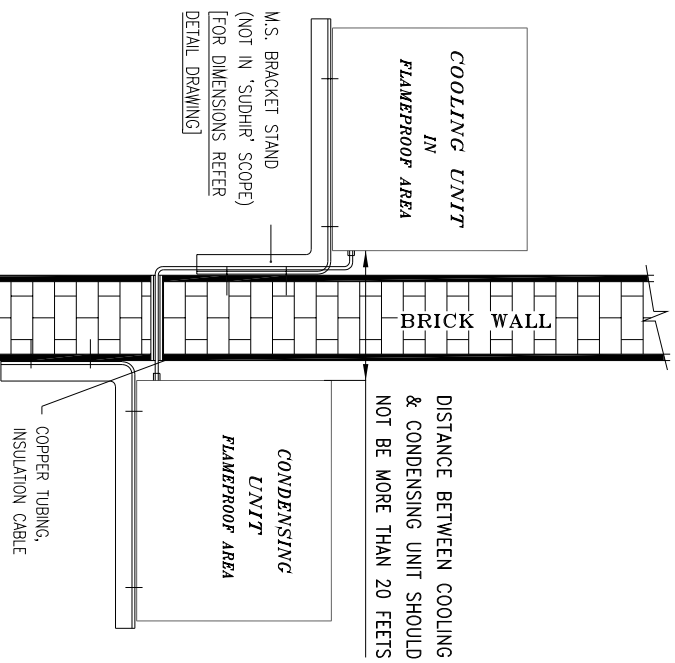
OVERALL DIMENSIONS ARE ±10mm

REV.	DATE	DESCRIPTION	DRN.	CHD.	APPD.	SCALE
Δ						
Δ						
Δ						

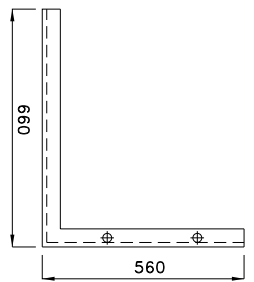
SUDHIR SWITCHGEARS PVT. LTD.
130, MULBARI SAMACHAR MARG, MULBARI - 400 023

SUDHIR BRAND SPLIT AIR CONDITIONER

CAT. No. : SAC/211
MODEL No. : SAC/211-1
DRN. : JMSHW
CHD. : JMSHW
APPD. : JMSHW
SHEET : 1 OF 2
N. T. S. : REV.-0
CMFR CERT. No. : CNP/4416/2016-17
Dt. : 22/06/2016
CMFR/FES/Clnt/5SP/L-22-23/247
PESO No. : .
BIS LICENCE No. : CM/L-0003931365



DISTANCE BETWEEN COOLING & CONDENSING UNIT SHOULD NOT BE MORE THAN 20 FEET



BRACKET FOR COOLING & CONDENSING UNIT
(NOT IN 'M/S. SUDHIR SWITCHGEARS' SCOPE)

- Flp-Wp Enclosure for Control Panel : CAT. No. : CGB/2C/131**
- 1 - FLAMEPROOF - ZONE-1 & 2, GAS GROUP - IIA & IIB AS PER IS/IEC 60079-1(2014),
 - 2 - WEATHERPROOF - IP-66 DEGREE OF PROTECTION AS PER IS/IEC 60529 (2001)
 - 3 - MATERIAL - CAST ALUMINIUM ALLOY LM6
 - 4 - FINISH - INSIDE & OUTSIDE LIGHT GREY EPOXY POWDER COATING SHADE No. 631 AS PER IS:5
 - 5 - EARTHING - 1 No. INTERNAL & 2 Nos. EXTERNAL SCREW OF M6 SIZE WITH 2 Nos. PLAIN WASHERS
 - 6 - HARDWARE - STAINLESS STEEL/M.S. GALVANISED HIGH TENSILE
 - 6 - GASKET - 'O' RING ENDLESS NEOPRENE RUBBER GASKET
 - 7 - CABLE ENTRY - 5 Nos. M20 SIZE CABLE ENTRIES FROM BOTTOM SIDE WITH 3 Nos. M20 SIZE (FLP-WP) BRASS NICKEL PLATED DOUBLE COMPRESSION TYPE CABLE GLAND & 2 Nos. M20 SIZE M.S. (FLP) STOPPING PLUG OF 'SUDHIR' MAKE
 - 8 - MOUNTING ARRGT. - WALL / COLUMN
- Internal Electrical Components as follows :**
- 1 - MCB - 1 No. 32 Amp. DP MCB OF 'INDO ASIAN/SCHNEIDER' MAKE
 - 2 - INDICATING LAMP - 1 No. 240V AC LED TYPE OF 'TEKNIC/VAISHNO' MAKE (LENCE COLOUR 'RED')
 - 3 - CAPACITOR - 1 No. 45mFD CAPACITOR OF 'SARDA' MAKE
 - 4 - TERMINALS - 12 Nos. 6sq. mm CLIP-ON TYPE OF 'ELMEX' MAKE

INDOOR COOLING UNIT

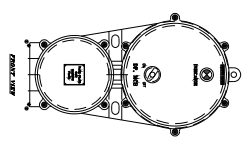
DIM.	1/1.5 TONNES	2 TONNES	2.5 TONNES	5 TONNES
A	660mm	660mm	660mm	660mm
B	432mm	440mm	432mm	432mm
C	635mm	660mm	635mm	635mm

OUTDOOR CONDENSING UNIT

DIM.	1/1.5 TONNES	2 TONNES	2.5 TONNES	5 TONNES
D	711mm	720mm	711mm	711mm
E	432mm	450mm	432mm	432mm
F	521mm	530mm	572mm	572mm

VOLTAGE RATING

T	STARTING CURRENT	RUNNING CURRENT
5 TONNE	22 Amp. Single Ph. 50/60 Hz., 230 Volts AC	10-12 Amp. (-) Single Ph. 50/60 Hz., 230 Volts AC



CABLE ENTRIES (BOTTOM SIDE)

CMFR TESTED FLP-WP ENCLOSURE (Ex-d) FOR CONTROL STATION SUITABLE FOR USE IN GAS GROUPS- IIA & IIB
 CAT. No. : CGB/2C/131
 CMFR CERT. No. : IN/CMFR/TR22/R/H560
 DC: 31/03/2022
 PESO CERT. No. : PS41156/1
 DC: 21/07/2022
 BIS LICENCE No. : CM/L-0003931365

FLAMEPROOF AREA

FLAMEPROOF AREA

NOTE :
 COMPONENT LAYOUT IS TENTATIVE RELOCATION OF PARTS & COMPONENTS IS POSSIBLE AT THE TIME OF ACTUAL MANUFACTURING.
 OVERALL DIMENSIONS ARE ±10mm

REV.	DATE	DESCRIPTION	DRN.	CHKD.	APPD.	SCALE	N. T. S.	REV.-0
Δ	2
Δ	2

SUDHIR SWITCHGEARS PVT. LTD.
 130, MULBARI SAMACHAR MARG, MULBARI - 400 023

SUDHIR BRAND SPLIT AIR CONDITIONER

CAT. No. : SAC/211
 MODEL No. : SAC/211-1
 DNR. : JASHWANT
 CMFR CERT. No. : CNP/4416/2016-17
 DC: 22/06/2016
 CMFR/FES/Clert/SSPL/22-23/147
 DC: 07/04/2022
 PESO No. :
 BIS LICENCE No. : CM/L-0003931365